

Modified Enlarged 24pt
OXFORD CAMBRIDGE AND RSA EXAMINATIONS

Friday 24 May 2019 – Morning

AS Level Biology A

H020/02 Depth in biology

Insert

Time allowed: 1 hour 30 minutes
plus your additional time allowance

READ INSTRUCTIONS OVERLEAF



INSTRUCTIONS TO EXAMS OFFICER / INVIGILATOR

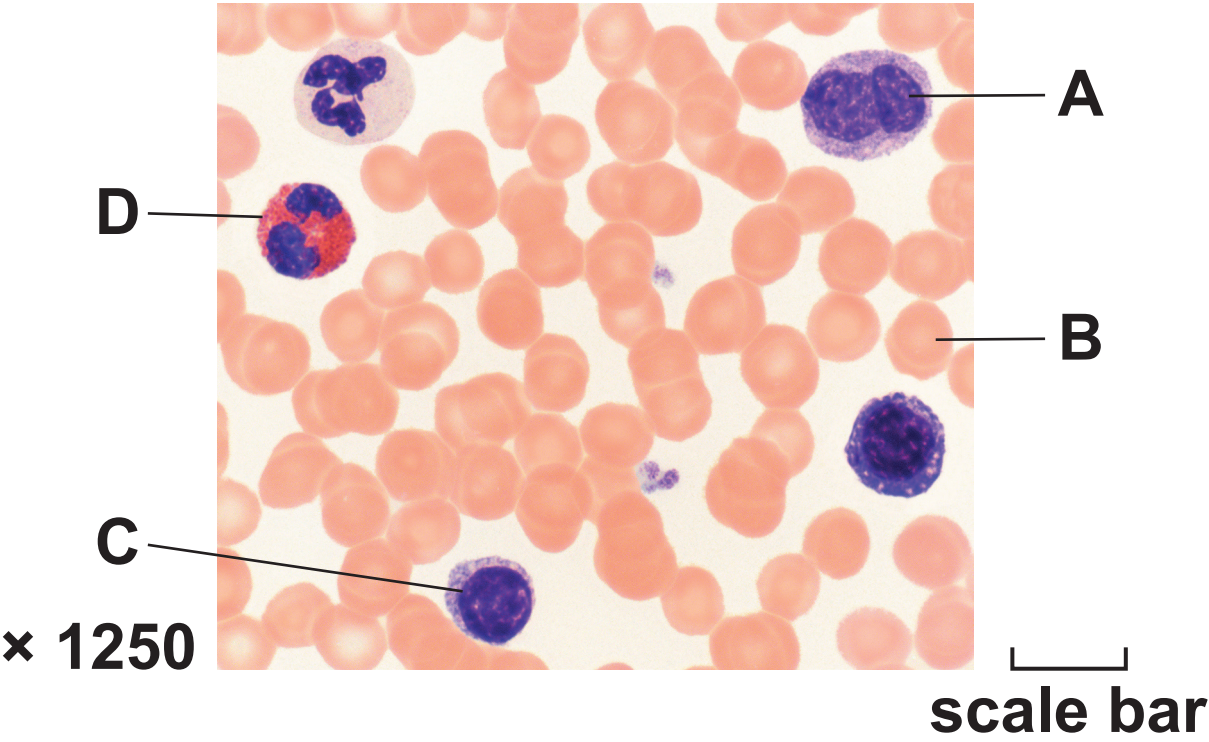
**Do not send this Insert for marking;
it should be retained in the centre or
recycled.**

**Please contact OCR Copyright should you
wish to re-use this document.**

INFORMATION

This Insert contains Fig. 2.

FIG. 2





Copyright Information

OCR is committed to seeking permission to reproduce all third-party content that it uses in its assessment materials. OCR has attempted to identify and contact all copyright holders whose work is used in this paper. To avoid the issue of disclosure of answer-related information to candidates, all copyright acknowledgements are reproduced in the OCR Copyright Acknowledgements Booklet. This is produced for each series of examinations and is freely available to download from our public website (www.ocr.org.uk) after the live examination series.

If OCR has unwittingly failed to correctly acknowledge or clear any third-party content in this assessment material, OCR will be happy to correct its mistake at the earliest possible opportunity.

For queries or further information please contact The OCR Copyright Team, The Triangle Building, Shaftesbury Road, Cambridge CB2 8EA.

OCR is part of the Cambridge Assessment Group; Cambridge Assessment is the brand name of University of Cambridge Local Examinations Syndicate (UCLES), which is itself a department of the University of Cambridge.